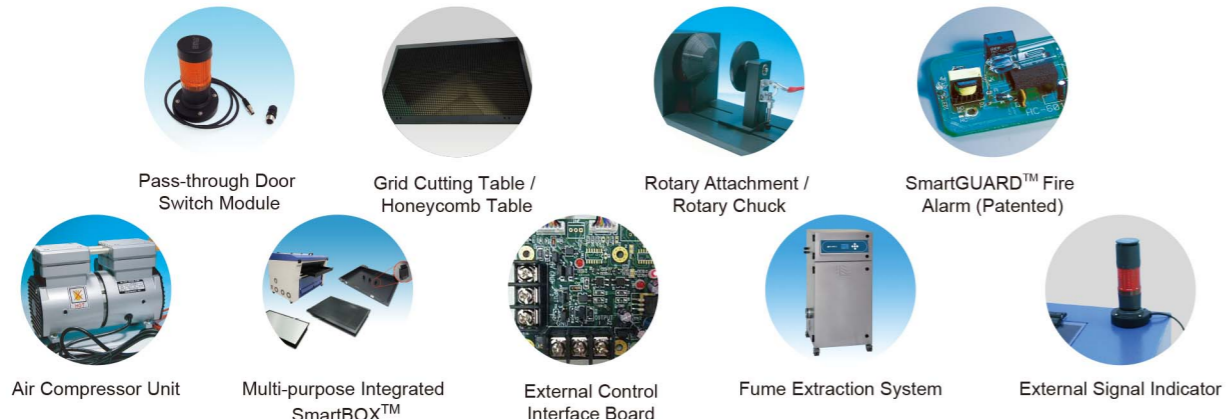


Optional Items



Laser Engraver

The Epitome of Excellence & Flexibility

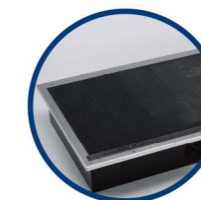
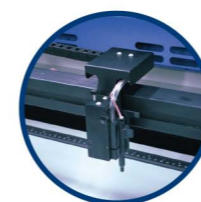
GCC LaserPro

Spirit GLS Hybrid

Upgrade your business with CO₂ & Fiber hybrid laser technology

Specification		Spirit GLS Hybrid		
Model		Hybrid CO ₂	Hybrid Fiber	Hybrid Dual
Work Area		34 x 24 in. (860 x 610 mm) Extendable to 38 x 24 in. (960 x 610 mm)		
Max. Part Size (W x L x H)	All doors closed	39 x 25 x 7 in. (990 x 635 x 177 mm)		
	All doors open	39 x ∞ x 7 in. (990 x ∞ x 177 mm)		
Table Size		40.3 x 27.7 in. (1025 x 705 mm)		
Dimensions		53.7 x 34.6 x 39.7 in. (1365 x 880 x 1010 mm)		
Laser Source		10.6-μm CO ₂ laser	Fiber laser	10.6-μm CO ₂ laser: 30 to 100W
		30~100W	20 / 30 / 60W	Fiber laser: 20 / 30 / 60W
Cooling		Air-cooled, Operating environment temperature 15°- 30°C (60°- 86°F)		
Drive		Closed-loop DC servo control		
Maximum Speed*		80 IPS		
Speed Control		Adjustable from 0.1-100% (Up to 16 color-linked speed settings per job)		
Power Control		Adjustable from 0-100% (Up to 16 color-linked power settings per job)		
Engraving Capability		256-level grayscale image processing capability		
Distance Accuracy		0.254 mm or 0.1% of move, whichever is greater		
Z-Axis Movement		Automatic		
Focus Lens		Standard 2.0" (Optional 3.0" & 4.0")		
Resolution (DPI)		Available 125, 250, 300, 380, 500, 600, 760, 1000, 1500		
Computer Interface		10 Base-T Ethernet, Full speed USB 2.0		
Compatible Operating Systems		MS Windows		
Display Panel		4-line LCD display showing current file name, total working time, laser power, engraving speed, file(s) loaded into memory buffer, setup and diagnostic menus		
Safety		Class I Laser Product Compliant with EN60825 Class 3R Laser Product Compliant with CDRH 2006/42/EC Machinery Directive Compliance Class 4 Laser Product Compliant with CDRH with the optional pass-through door module		
Operation Voltage		Below 80Watt, 100-240VAC, 50/60HZ Auto Switching, max. 15A 80Watt and above, 200-240VAC, 50/60HZ Auto Switching, max. 15A		
Fume Exhaust System		External exhaust system with minimum flow rate 800m ³ /h (CFM 471 ft ³ /h) is required, 2.3kPA negative pressure (Pure-Air PA-1500FS @ 4" exhaust port)		

* Speed does not equal to throughput. See dealer or visit www.GCCworld.com for more details.
 * Original GLS maximum power consumption 4400W is not correct. It is fixed now by EE.
 Δ Specifications are subject to change without prior notice.



Spirit GLS Hybrid

- 38" x 24" (960 mm x 610 mm) extra large working area
- CO₂ and Fiber dual lasers hybridized in one laser system
- QSM (Quality Speed Mode) maintains 100% engraving quality while operating at maximum speed
- Patented SmartACT™ motion control technology increases your productivity by reducing ramping process and job running time
- Drag N Play feature assures remarkably easy and fast set-ups
- High speed DC servo motor for precise and rapid movement of the laser carriage
- Reliable DuraGuide motion system with reinforced Kevlar belt delivers superb output quality
- LED light modules illuminate the working area

Authorized Dealer



www.GCCworld.com



GCC Headquarters 4F-1, No.236, Fude 2nd Rd., Xizhi Dist., New Taipei City 22151, Taiwan 886-2-6616-6692 Fax : 886-2-2694-6875
 GCC China No.1, Chen Feng Road, Yushan, Kunshan, Jiangsu 215300, China 86-512-5726-1515 Fax : 86-512-5726-1518
 GCC Europe B.V. Eglantierbaan 43-45, 2908 LV, Capelle a/d IJssel, The Netherlands 31-10-458-9367 Fax : 31-10-451-9874
 GCC America, Inc 20453 E Valley Blvd. Walnut, CA 91789, USA 1-909-718-0248 Fax : 1-909-718-0251
 US & Canada Only Toll Free: 1-888-284-5211



Laser Engraver

GCC LaserPro Spirit GLS Hybrid

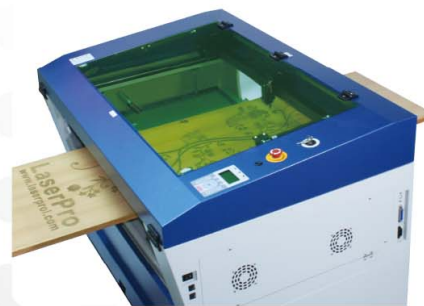


GCC LaserPro Spirit GLS Hybrid

The LaserPro Spirit GLS Hybrid is the flagship model of the award winning LaserPro Spirit line of laser engravers. In succession to GCC LaserPro worldwide accolades features, Spirit GLS Hybrid further upscale its capability to CO₂ & Fiber Hybrid laser option in one system, engraving, cutting, marking on organic and metal pieces all possible now.

CO₂ & Fiber Hybrid Lasers

GCC Hybrid technology allows to install CO₂ & Fiber dual lasers in one system to expand your business from organic materials processing to direct metal engraving.

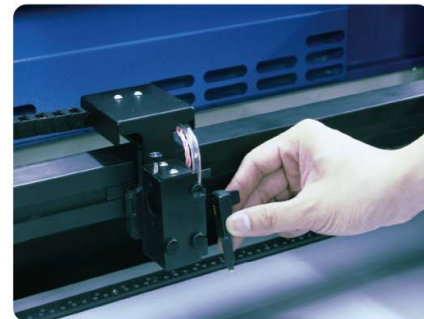


Pass-through Front and Rear Doors (Optional)

Optional front and rear door design enables loading of extremely long working pieces.

DuraGuide

Systematic and reliable motion system embedded with strong mechanical framework, reinforced Kevlar belts, and accurate servomotor control technology to deliver superb output quality under rapid movement.

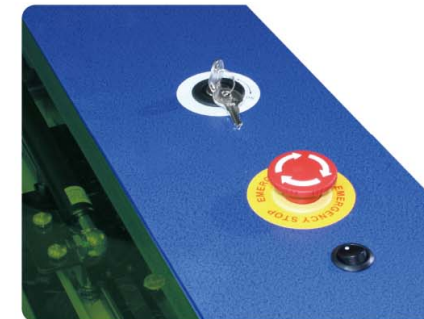


SmartPIN AutoFocus (Patented)

The plug-and-play probe design makes focusing a one-touch process and provides the accuracy and precision required for optimum quality in the lasing process.

Real Pointer Alignment Feature

Extra beam combiner to align red pointer with laser beam, What You See is What You Get.

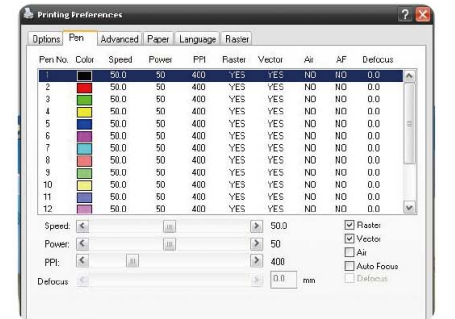


Key Switch & Emergency Stop

Key switch safeguards the machine from unauthorized use. Prominent emergency button located on the top of the machine allows operators to stop the laser and the motion carriage immediately to provide a safe operating environment.

SmartACT™ (Patented)

Ground-breaking technology that reduces the ramping process, the job running time, which translates into higher productivity.



Innovative Software Features

Unbeatable print driver features SmartCENTER™, Defocus by pen, Programmable Air Assist Truelmage, Vector Path Optimization, allow easy set up and achieve marvelous output quality.