



World 1st elevation and cold foil printer

JF-2418UV



Features

- ◆ Texture Printing Effect
- ◆ Cold Foil Application
- ◆ High Gap Printing
- ◆ 24"x18" Flatbed UV Printer
- ◆ Max. of 11.8" Media Thickness
- ◆ Dual UV LED Lamps with Advanced Rod Lens
- ◆ Printhead Gap Auto-Detection
- ◆ Auto Media Calibration (AMC™)
- ◆ Built-in ADA Printing Function
- ◆ Roll to Roll System / Rotary Attachment (Optional Item)

JF-2418UV Flatbed Printer

Model		JF-2418UV 3PH	JF-2418UV 6PH
Printing Method		On-demand Piezo head	
Print Head (Drop Size)		Japanese print head dedicated for UV printing solution	
Printing Area (W x L)		24" x 18" (610 x 457 mm)	
Max. Media Size (W x L x H)	Sheet	24" x 18" x 11.8" (610 x 457 x 300 mm)	
	Weight	Less than 15 kg	
Table Height Adjustment		AMC	
Speed	High Speed	3.75 m ² / hr	6.17 m ² / hr
	Quality	2.23 m ² / hr	4.15 m ² / hr
	High Density	1.6 m ² / hr	2.04 m ² / hr
Ink	Type	1 liter UV curable ink	
	Colors	CMYKWV / CMYKWPr	
Ink Curing Unit		Dual UV LED lamps	
Printing Resolutions		1200 x 600 dpi 、 1200 x 1200 dpi	
Distance Accuracy – When Printing		Error of less than +/-0.3% of distance traveled, or +/-0.3mm (0.01 inch), whichever is greater	
Z-movement		Motorized	
Control Panel		Touch Screen (480 x 272 resolution)	
Interface		Ethernet	
Environment (Temperature/Humidity)		22°C-30°C (71.6°F:- 86°F) / (40%-60% humidity), higher recommended	
Special Function		Tactile printing function, cold foil application, high gap printing	
Optional		Rotary Attachment Roll to Roll System Fume Extraction Unit Static Eliminator Module	

* Above specifications are subject to change without prior notice.

www.GCCworld.com



GCC Headquarters 4F-1., No.236, Fude 2nd Rd., Xizhi Dist., New Taipei City 22151, Taiwan 886-2-6616-6692 Fax : 886-2-2694-6875
 GCC China No.1, Chen Feng Road, Yushan, Kunshan, Jiangsu 215300, China 86-512-5726-1515 Fax : 86-512-5726-1518
 GCC Europe B.V. Eglantierbaan 43-45, 2908 LV, Capelle a/d IJssel, The Netherlands 31-10-458-9367
 GCC America, Inc 20453 E Valley Blvd. Walnut, CA 91789, USA 1-909-718-0248 Fax : 1-909-718-0251
 US & Canada Only Toll Free: 1-888-284-5211



World 1st elevation and cold foil printer

JF-2418UV Flatbed Printer



JF-2418UV

The new generation of GCC flatbed UV printer, JF-2418UV, has attractive new look, high throughput, reliable and stable printing quality, user-friendly interface and unique functions including tactile printing ability, high gap printing function, and cold foil sleeking capability that provides great versatility and uplifts printing possibility.



Feature



High Gap Printing

Allow user to print on materials with uneven surfaces with a slope of 10 to 20 degree, which avoids print head being crushed and retains the print quality at the same time. For example, custom ceramic plate, tablet cover, etc.

* Improper usage of high gap printing may cause print head nozzles clogged by the reflection of UV light.

** A higher gap between print heads and substrate may cause printing images vaguer when processing.



Cold Foil Application

With a specially-developed printing process, LED energy control, and GCC primer inks, JF-2418UV can easily decorate printed substrates into sophisticated and beautiful merchandises, such as, Mifare cards, invitation cards, acrylics.

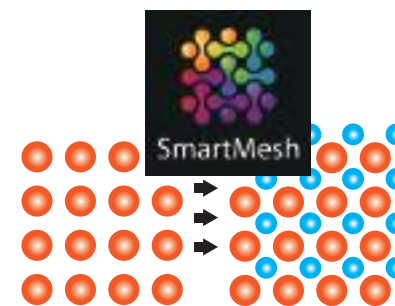
* Cold foil function is only available for JF-2418UV (with primer) model.

** A foil sleeking machine is required to apply foil on printed media.



Texture Printing Effect

JF-2418UV is a convenient tool for anyone to create raised pattern and provide added value to RFID, boutique goods and jewelry, oil painting reproduction and so on. Moreover, the high resolution printing ability delivers refined output—even 2pt small letters can be printed with high sharpness and definition in sophisticated details to serve a diversity of applications.



SmartMESH™ Banding Free Solution

Specially designed SmartMESH™ function applies complex algorithm to ink jetting patterns control to create unparalleled graphic designs. The advanced SmartMESH™ technology effectively solves banding issues and greatly improves image quality.

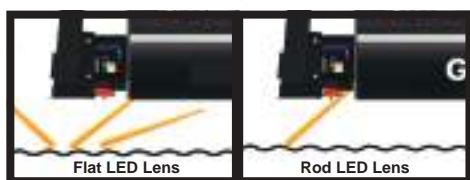
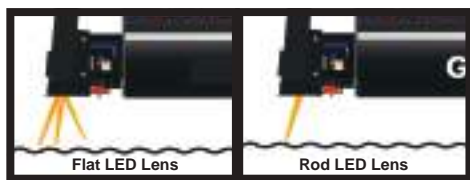


Auto Media Calibration (AMC™) Printhead Gap Auto-Adjustment

The gauges the distance between the print heads and loaded media can be automatically detected and adjusted to the optimized position based on the thickness of the loaded media.

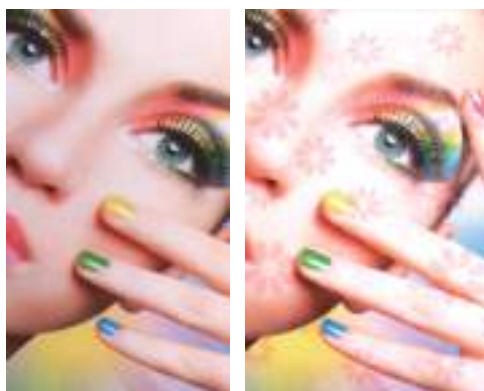


Printhead Gap Auto-Adjustment lowers the platform automatically when detecting obstacles that block the movement of printhead before printing to avoid printhead damages.



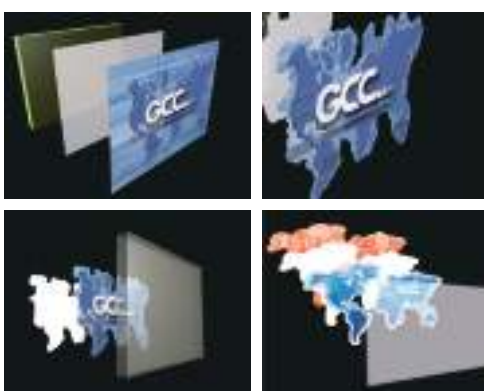
Rod LED Lens

Rod Lens are used on the UV LED lamps to condense LED lights to reduce reflection and damage to print heads and nozzles.



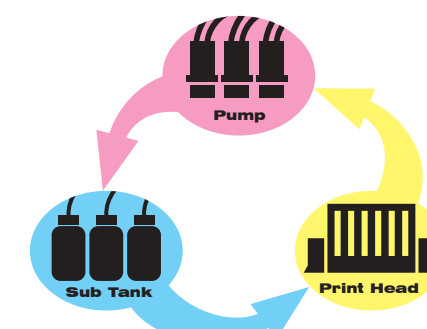
Patented Color Varnish

Color varnish function is an excellent helper of color customization and fully exhibits the promoting effects, which offers added value on products and presents eye-catching printing quality.



Dedicated White Solution

JF-2418UV offers four major utilizing white ink applications as a base, overcoat, spot color and color-white-color for 3 layer printing at the same time. With the White solution, it can be easily used to produce brilliant and rich color output on any transparent and dark media, offering excellent quality images to fulfill all needs for Sign, Labeling and Packaging industries.



Automated White Ink Circulation

Knowing that white ink settles down easily, GCC specially developed automated white ink circulation regularly performs from ink bottle to print heads to prevent the pigment in white ink from settling. The automated white ink circulation greatly diminishes the white ink loss and generate the outstanding printing quality.

Unparalleled Productivity

JF-2418UV offer outstanding throughput and guarantee printing quality, up to 6.17m²/h printing speed—the best performance in the same category you can find in the market.

High Speed

600 X 1200 dpi, 6.17 m²/hr, B3 size printing time: 1 min 55 sec

Quality

600 X 1200 dpi, 4.15 m²/hr, B3 size printing time: 2 min 50 sec

High Density

600 X 1200 dpi, 2.04 m²/hr, B3 size printing time: 5 min 47 sec

